

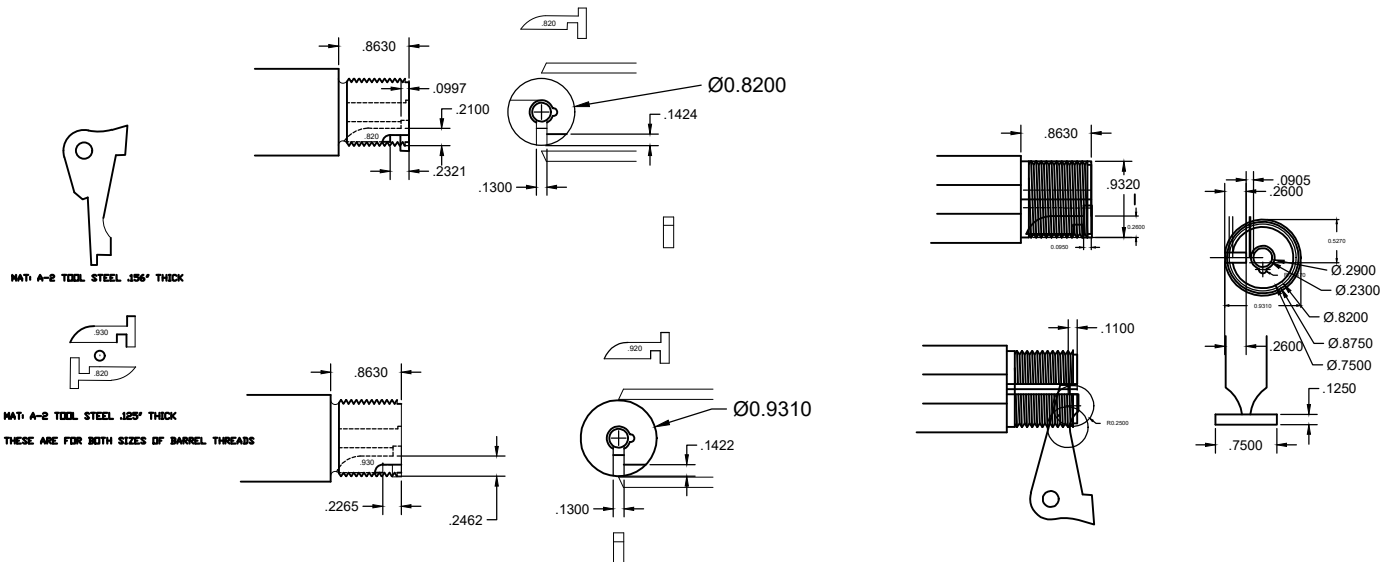
CUT FOR .930" THREADS
 TOUCH THREADS AND CUT .246 DEEP
 TO SHOULDER

CUT FOR .820" THREADS
 TOUCH THREADS AND CUT .211 DEEP
 TO SHOULDER

AFTER FINISHING THE CUT MOVE THE BARREL UP
 OR DOWN

.005" FOR SIDE CLEARANCE ON THE EXTRACTOR
 MOVE TO THE END AND CUT .110" DEEP AND MOVE
 UP OR DOWN THE SAME AS YOU DID ON THE SIDE
 CUT BE CAREFUL NOT TO CUT THE OPPOSITE
 SIDE WITH THE CUTTER.

THE MATERIAL IS A2 TOOL STEEL AND TO HEAT
 TREAT IT BRING IT UP TO A CHERRY RED AND
 QUINCH IN OIL.



3/4 x 1/8 WOODRUFF CUTTER